

International Residential Code (IRC) – Luminaires in clothes closets.

Types of luminaires permitted by the IRC include:

- surface-mounted or recessed incandescent or LED luminaires with completely enclosed lamps,
- surface-mounted or recessed fluorescent luminaires; and
- surface-mounted fluorescent or LED luminaires identified as suitable for installation within the closet storage area.

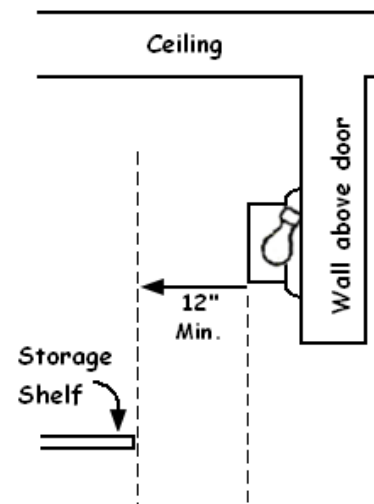
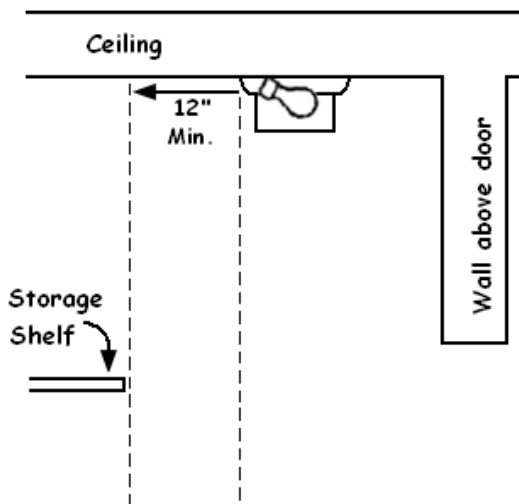
Luminaires not permitted by the IRC:

- Incandescent luminaires with open or partially enclosed lamps and pendant luminaires or lamp-holders shall be prohibited.

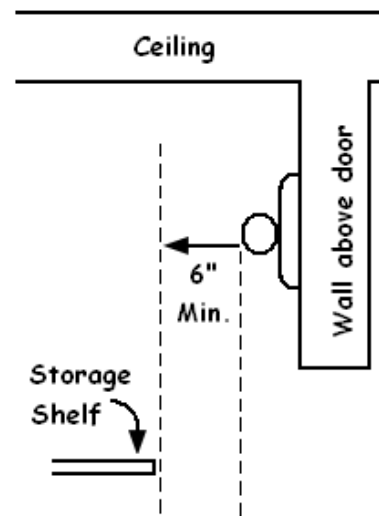
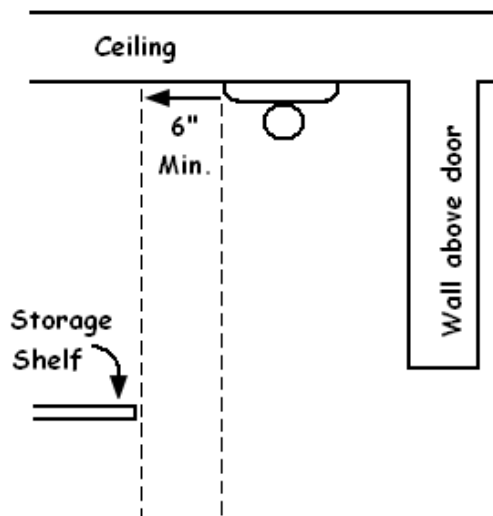
Clearances permitted by the IRC:

The minimum clearance between luminaires installed in clothes closets and the nearest point of a storage area shall be as follows:

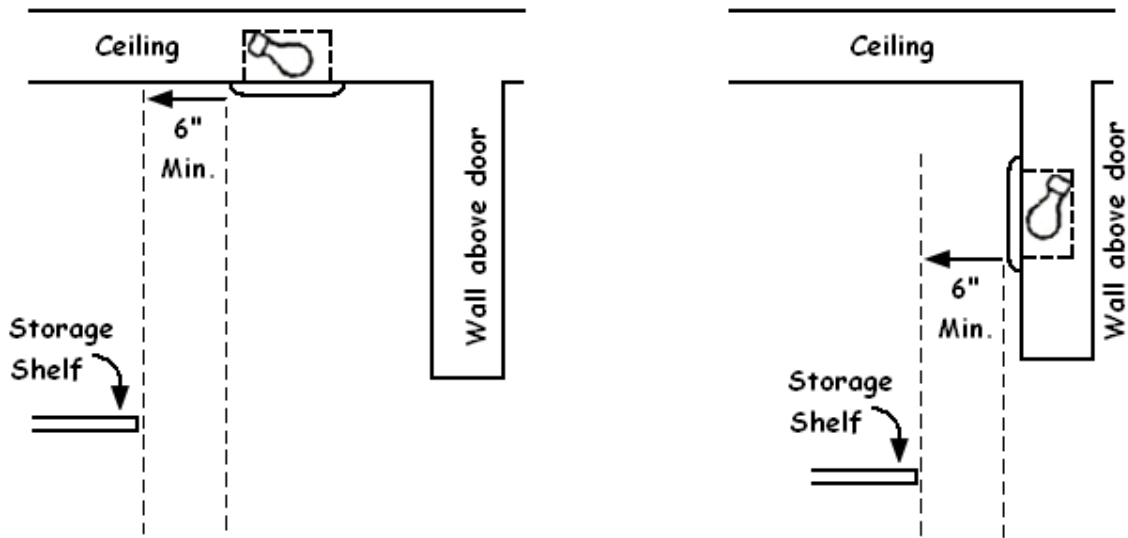
1. Surface-mounted incandescent or LED luminaires with a completely enclosed light source shall be installed on a wall above the door or on the ceiling, provided that there is a minimum clearance of 12 inches (305 mm) between the fixture and the nearest point of a storage space.



2. Surface-mounted fluorescent luminaires shall be installed on the wall above the door or on the ceiling, provided that there is a minimum clearance of 6 inches (152 mm).



3. *Recessed incandescent luminaires or LED luminaires with a completely enclosed light source shall be installed in the wall or the ceiling provided that there is a minimum clearance of 6 inches (152 mm).*



4. *Recessed fluorescent luminaires shall be installed in the wall or on the ceiling, provided that there is a minimum clearance of 6 inches (152 mm) between the fixture and the nearest point of storage space.*
5. *Surface-mounted fluorescent or LED luminaires shall be permitted to be installed within the closet storage space where identified for this use.*