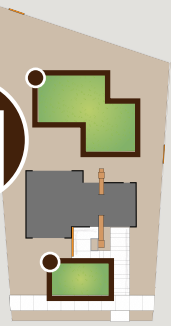




Water Efficiency Standards

Herriman City's Water Efficiency Standards for residential landscapes are based on Localscapes principles and have been modified as necessary to meet City ordinance requirements. The five areas are recommended - property owners may choose any or all elements to include in their plan.

1 Central Open Shape



1 - Central Open Shape

Localscapes begin with a Central Open Shape that is geometric in nature. The size and material used for this element can be unique to each landscape, but typically there will be a Central Open Shape in both the front and back yards.

Design Requirements:

- The Central Open Shape is unobstructed. Trees, posts, planting beds, playsets, and other elements are not placed inside this area.
- The Central Open Shape is created with a permanent material that is different from and creates contrast with the surrounding landscape.
- The Central Open Shape has a clearly defined edge.
- The Central Open Shape shall not exceed the greater of 250 sq. ft., or 35% of the total landscaped area.
- The Central Open Shape cannot be lawn if it is on a slope with more than a 25% grade.

Additional Requirements if Lawn is used as a Central Open Shape:

- The Central Open Shape is irrigated separately. This is the only landscape element that can use overhead sprinklers. All other irrigated areas will use a drip system.
- The Central Open Shape is at least 8 feet wide at its narrowest point.

2 Gathering Areas



2 - Gathering Areas

Gathering Areas like patios, gazebos, or outdoor seating areas of varying sizes are incorporated throughout the landscape.

Design Requirements:

- Gathering Areas are hardscaped. Surfacing materials may include concrete, brick pavers, stone, gravel, or crushed stone.
- In a landscape without lawn, Gathering Areas may function as the Central Open Space.

3 Activity Zones



3 - Activity Zones

Activity Zones like children's play areas, fire pits, vegetable gardens, and hot tubs are designed to meet a homeowner's needs and interests.

Design Requirements:

- Activity Zones are not surfaced with lawn.
- Activity Zones are placed outside the Central Open Shape.

4 Paths



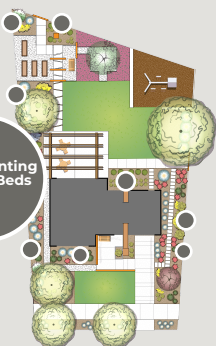
4 - Paths

Paths connect each of the previously designed elements.

Design Requirements:

- Paths are not lawn. Paths can be created with hardscape, pavers, mulch, or other groundcover.
- Paths are not irrigated.

5 Planting Beds



5 - Planting Beds

Remaining areas of the landscape become Planting Beds.

Design Requirements:

- Planting beds are drip irrigated. Drip systems should be equipped with a pressure regulator, filter, flush-end assembly and any other appropriate components. Micro-sprays and bubblers are not allowed in planting beds.
- Planting beds have at least 50% plant coverage at maturity and are covered in 3-4" of mulch.

Park Strips Design Requirement:

- Lawn is not allowed in park strips. Park strips should be designed with hardscape, mulch, and other planting materials.



Water Efficiency Standards

The purpose of these Water Efficiency Standards is to conserve the public's water resources by establishing water conservation standards for indoor plumbing fixtures and outdoor landscaping.

The standards shall be required for all developer/contractor installed residential, commercial, institutional, and industrial construction, as applicable. The Outdoor Landscaping Standards shall also be required for new and rehabilitated landscaping installed by homeowners.

Why should you follow these requirements?

Water Efficiency Standards are designed to offer all sorts of benefits like reduced maintenance, simplified irrigation, high curb appeal—and of course, save water. Following this checklist is the best way to ensure your landscaping project will deliver the benefits you expect. **If your project doesn't meet these requirements, it may not receive approval from the City.**



Water Efficiency Standards are based on Locascapes principles that have been modified to meet City requirements.

Herriman City Outdoor Landscaping:

Outdoor Landscaping Requirements: All new and rehabilitated landscaping for public agency projects, private development projects, developer-installed landscaping in multi-family and single-family residential projects within the front and side yards, and homeowner provided landscape improvements within front and side yards shall comply with the landscaping standards set forth.

- All irrigation shall be appropriate for the designated plant material to achieve the highest water efficiency.
- Each irrigation valve shall irrigate landscaping with similar site, slope and soil conditions, and plant materials with similar watering needs.
- Landscaped areas shall be provided with a WaterSense labeled smart irrigation controller which automatically adjusts the frequency and/or duration of irrigation events in response to changing weather conditions.
- At least 3-4 inches of Mulch, permeable to air and water, shall be used in Planting Beds to control weeds and improve appearance of the landscaping.
- At maturity, landscapes are recommended to have enough plant material to create 50% living plant cover at the ground plane, not including tree canopies.
- Lawn shall not be installed in Park Strips, Paths, or on slopes greater than 25% or 4:1 grade and be less than 8 feet wide at its narrowest point.
- In residential landscapes, the landscaping shall adhere to the Locascapes requirements.
- In commercial, industrial, institutional, and multi-family development common area landscapes, Lawn areas shall not exceed 20% of the Total Landscaped Area, outside of Active Recreation Area.

